



ISABELLA TRAGLIO VISMARA



15–29 January 2014

ROBILANT + VOENA

38 Dover Street
London W1S 4NL
art@robilantvoena.com
www.robilantvoena.com

ISABELLA TRAGLIO VISMARA
HUMAN KIND VISITING GOD

A POETIC VIEW OF A DESPERATE HOPE

ARTURO SCHWARZ

Suspended in mid-air under a naked sky: incredibly high, gloomy buildings, majestically sinister, closed up on themselves. Verging on the hostile, indeed threatening. Without doors. Without windows. Uninhabited, uninhabitable. Inspired by a Kafkaesque severity more than Euclidean essentialness.

At their base are platforms. Are they the vehicles of immaterial beings such as air, light and sound? Beings that have come from another universe? Architects of buildings in a ghost city in which only they could manage to live? This is the impression which these immense panels gave me (8 metres by 3) which the slender Isabella Vismara has conceived

and painted in harsh, virtually monochromatic tones. Her undertaking irradiates a dramatic form of poetry. And it is hard-hitting. Few other works could refer to the period we are experiencing with as much desperation. It is a period in which immanence prevails over transcendence, indifference over love, egotism over solidarity, the prosaic over poetry.

André Breton placed all his hopes in young people. Only young people, he thought, would still have been able to change life – as called for by Rimbaud – and to transform the world – as claimed by Marx. It is symptomatic that this cry has been made today by a young person. A woman.

A TECHNIQUE OF ENCAUSTIC

The encaustic is performed in two different techniques, the spatula method and the brush method. In the first case the melted wax is mixed with other substances (resins or gums) in order to allow it to be spread with a spatula, even cold. In the second case, with a brush, the wax is kept liquid in a metal palette exposed to a heat source.

We can glean what this technique consists of from the texts of Pliny the Elder and Vitruvius, but it is more compelling and stimulating to seek to understand it from the works of this artist, who decided to revive those ancient preparations that bring to

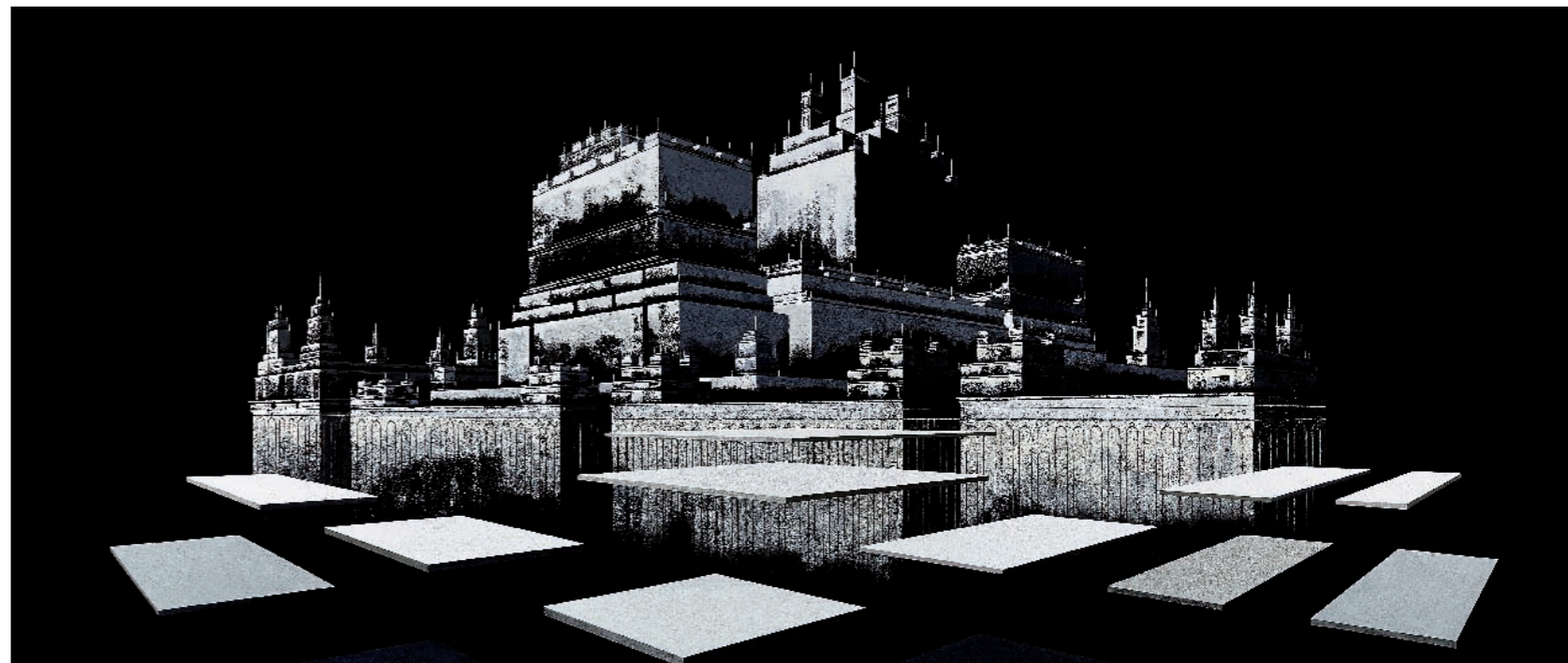
mind an alchemist's workshop as much as an artist's studio.

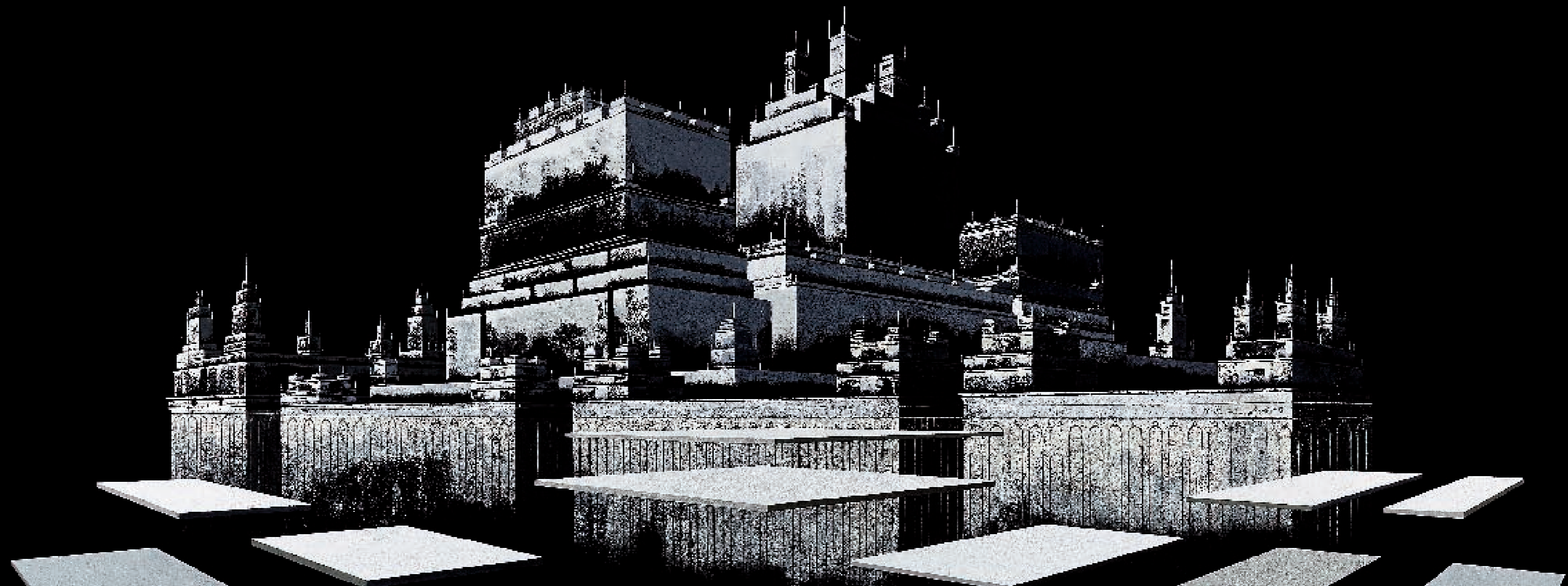
In approaching her works we have to do with a strongly material component that is derived from the process of working the wax. Once heated and brought to the proper temperature, it is first carefully mixed with natural resins and pigments and then applied to the wooden support, suitably prepared to receive it. The result is surprising. Layers of light seem to emerge from the wooden surface as dazzling deposits of material, and these are the magic of Isabella Traglio Vismara's compositions.

WORKS

CITTÀ SOSPESA

[260 x 600 cm]

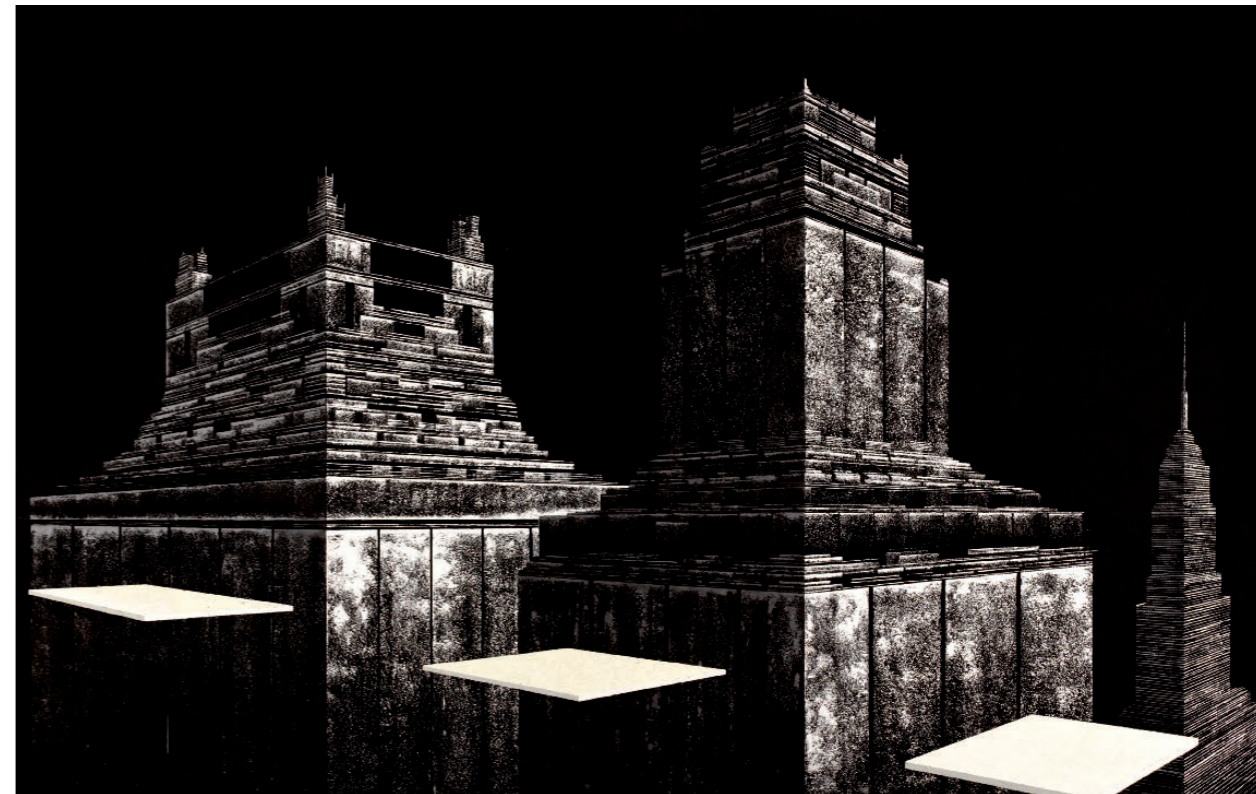






STONE CITY

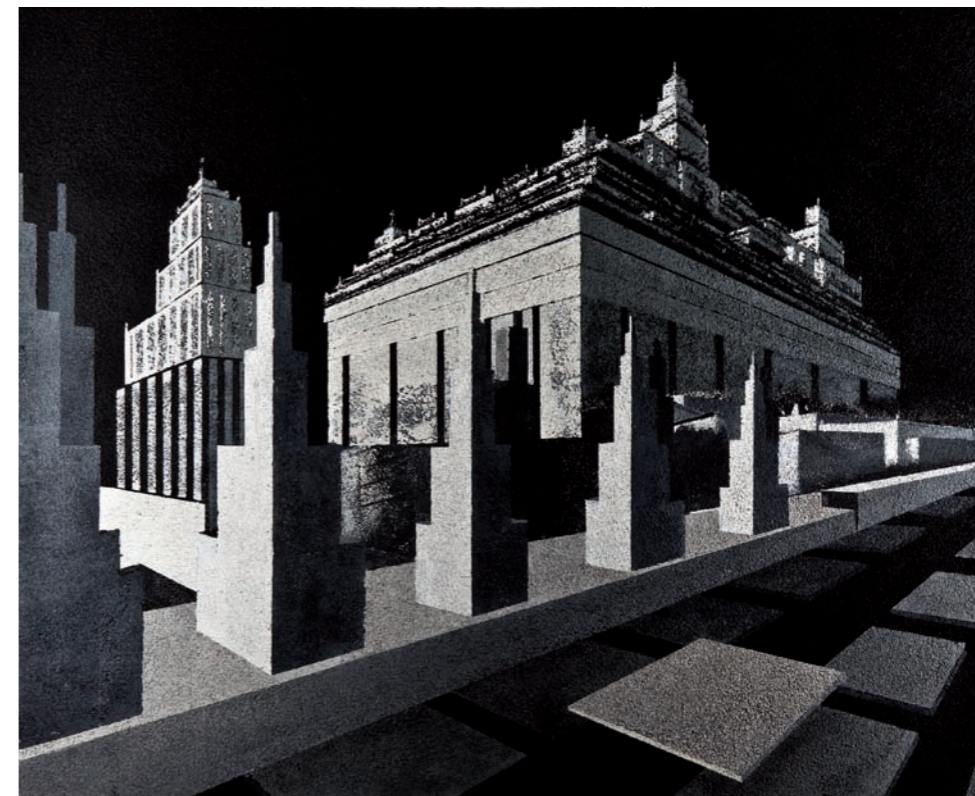
[260 x 400 cm]

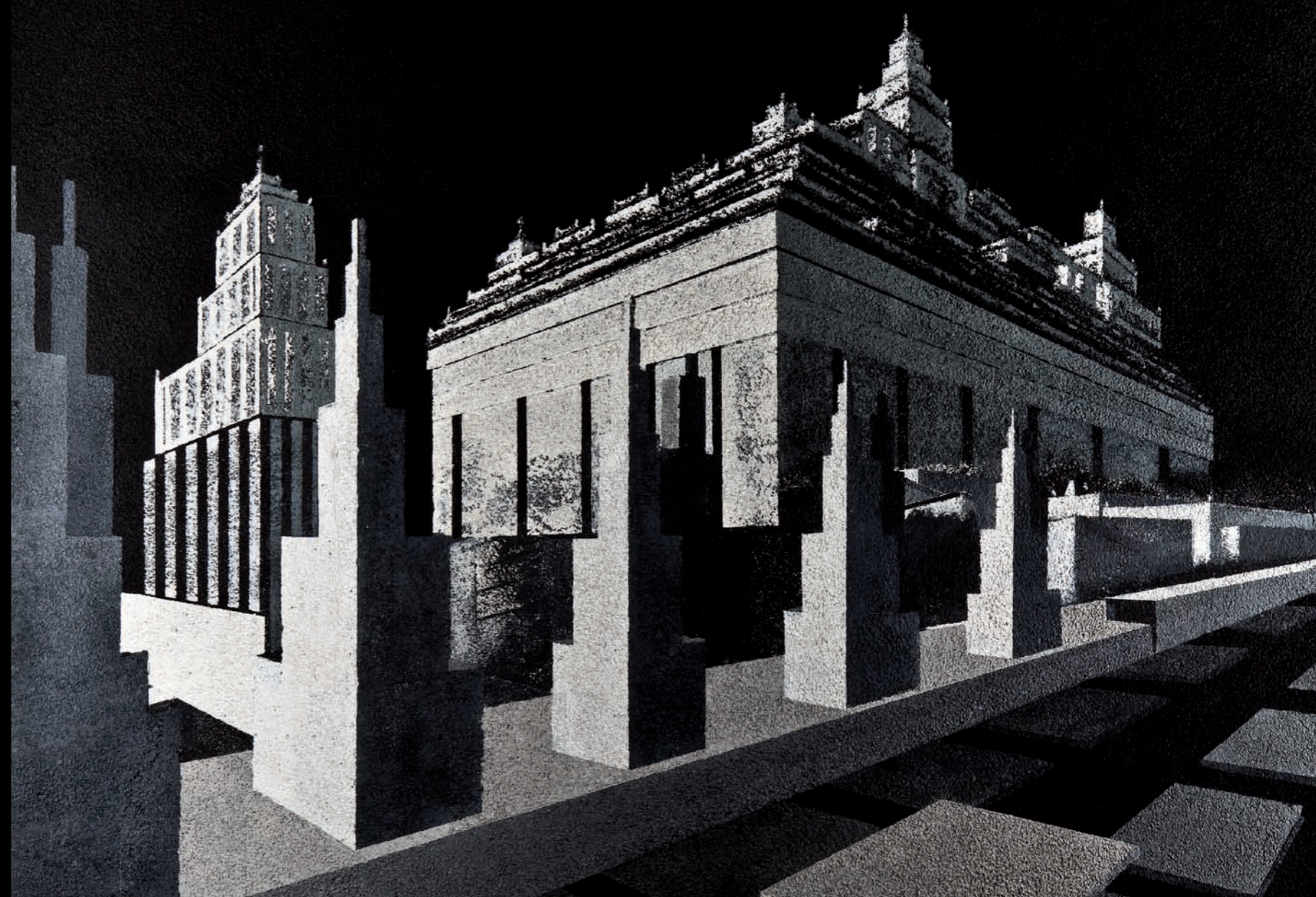




CITTÀ SOSPESA CON TORRI

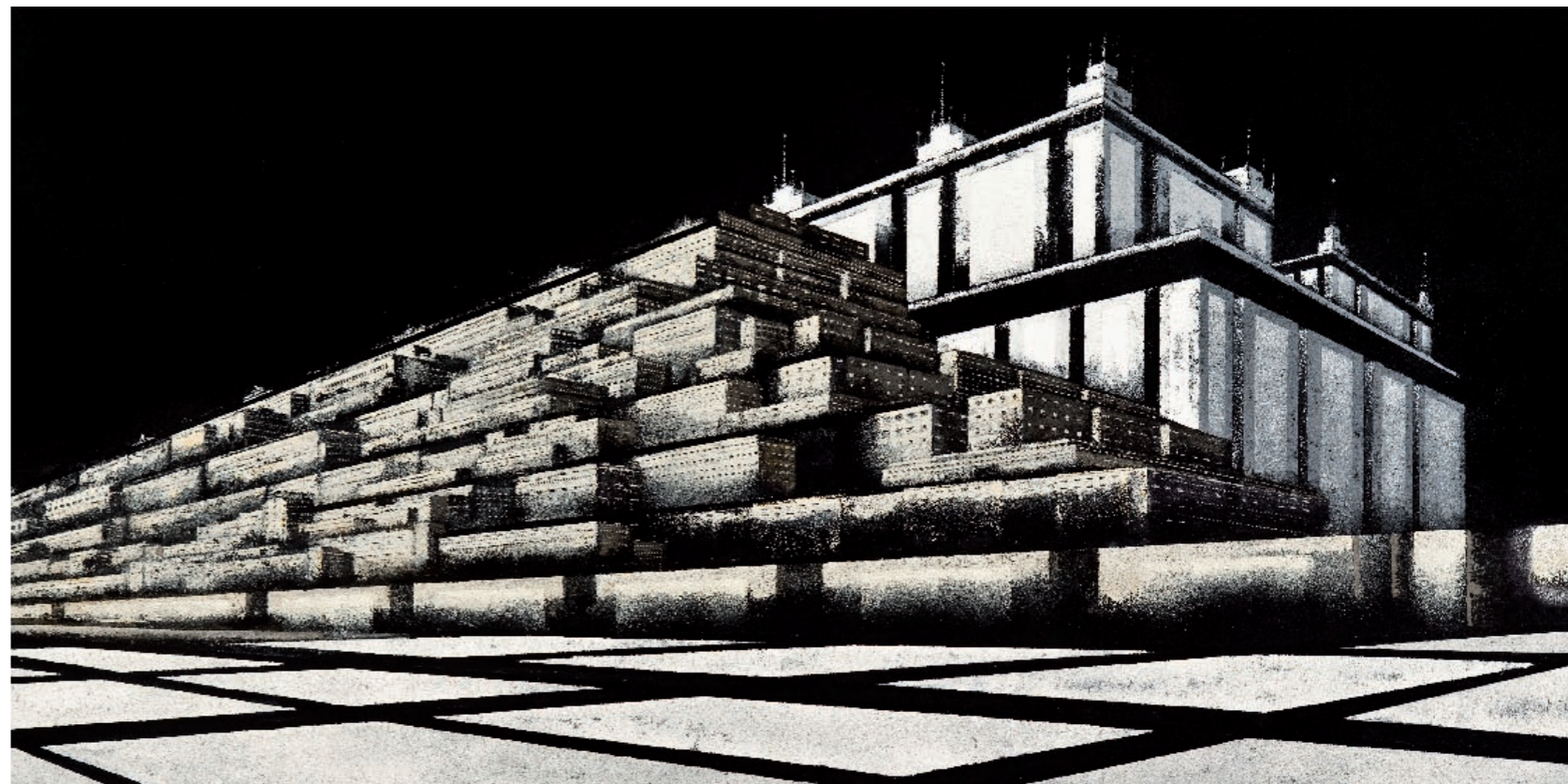
[100 x 120 cm]





FORTEZZA

[100 x 200 cm]

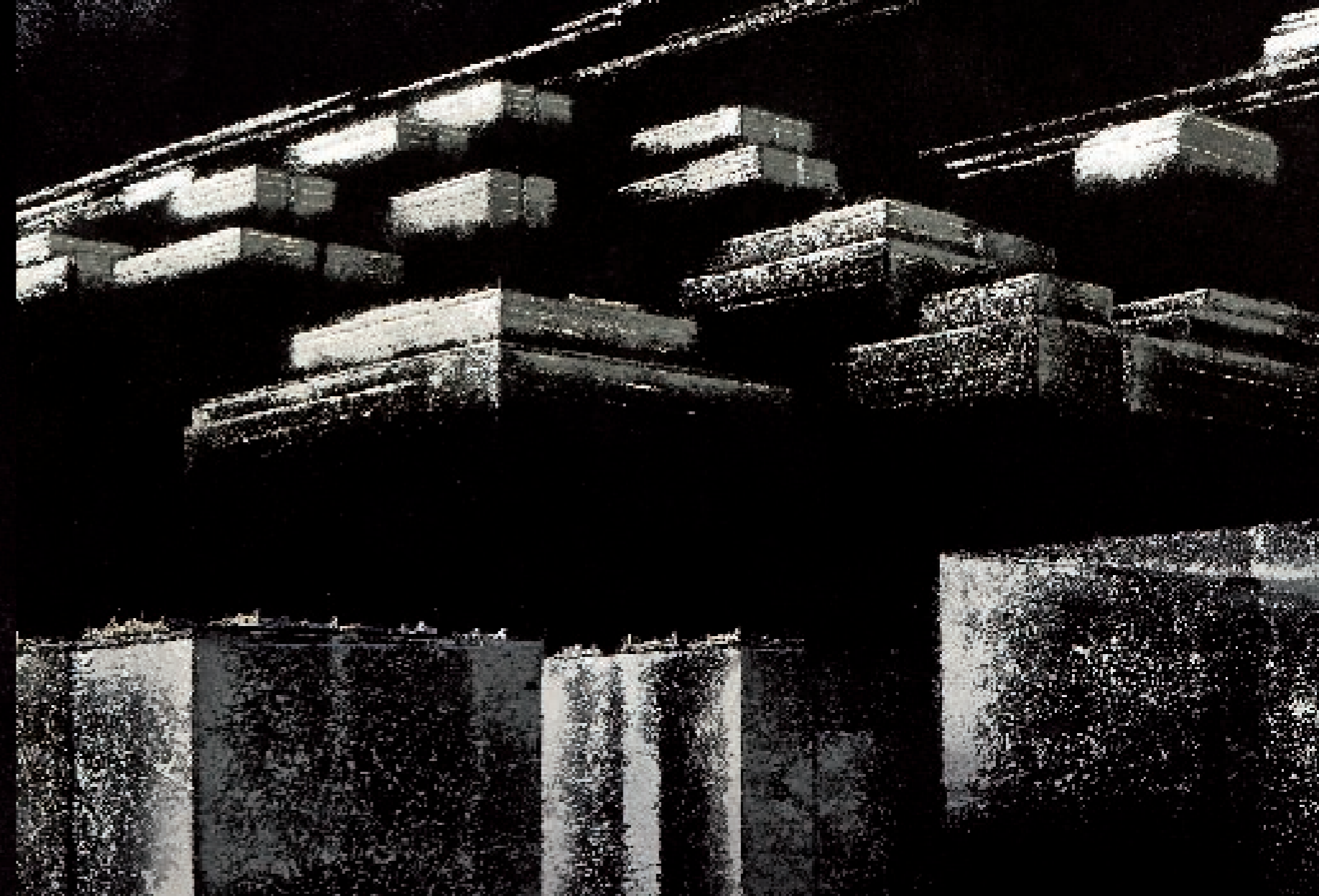
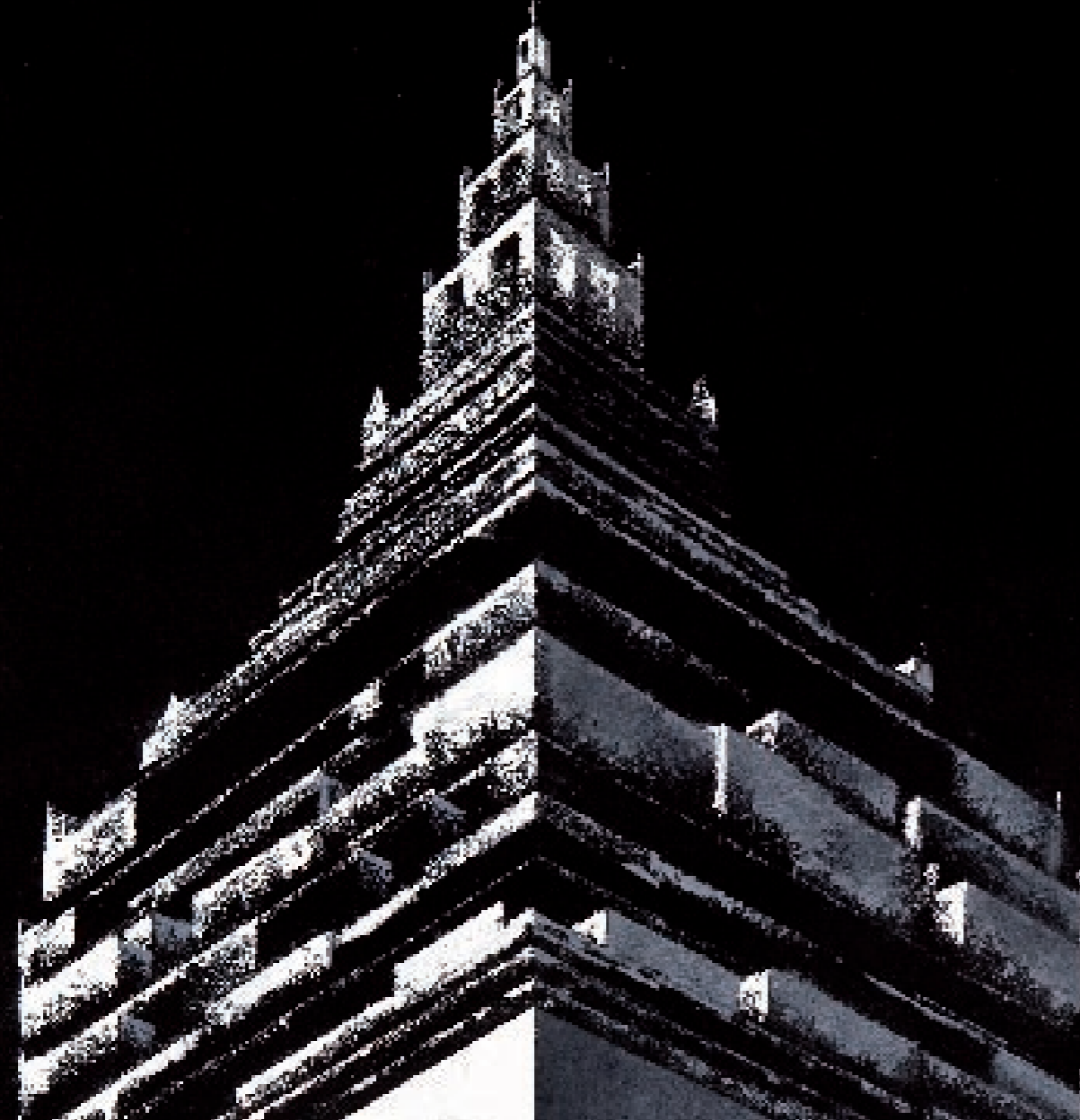




DWELLING OF THE INVISIBLES

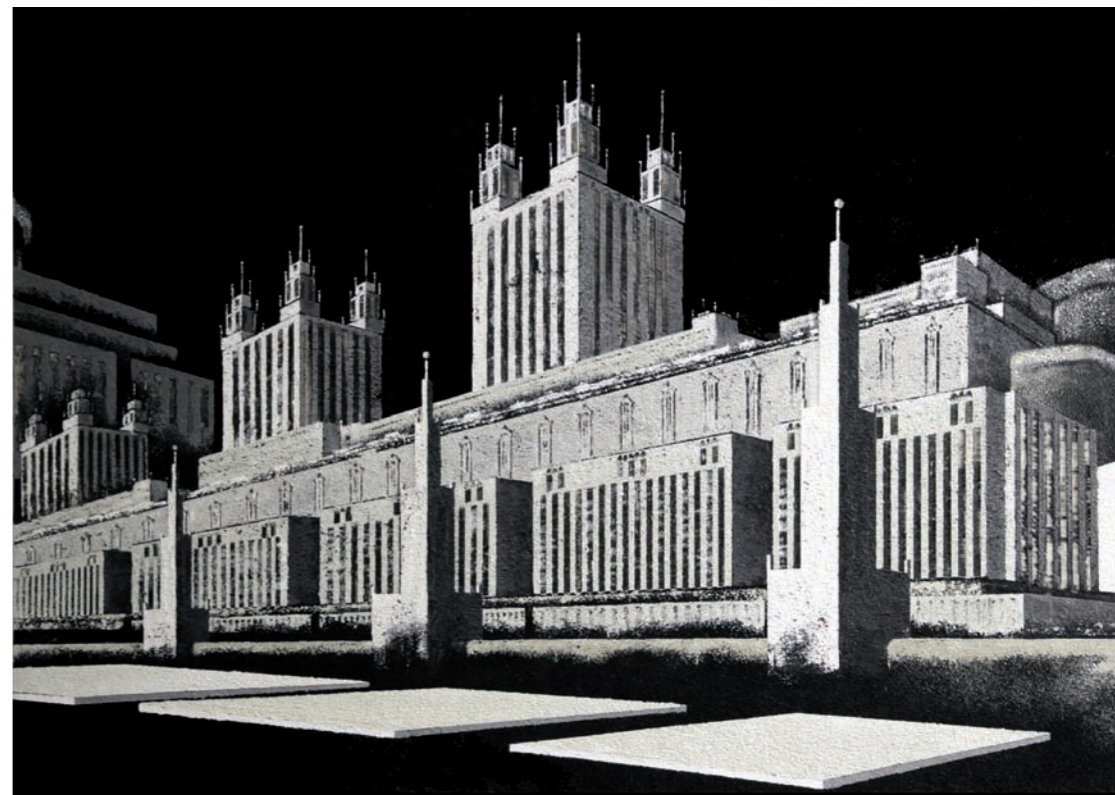
[200 x 100 cm]





CITTÀ BIANCA

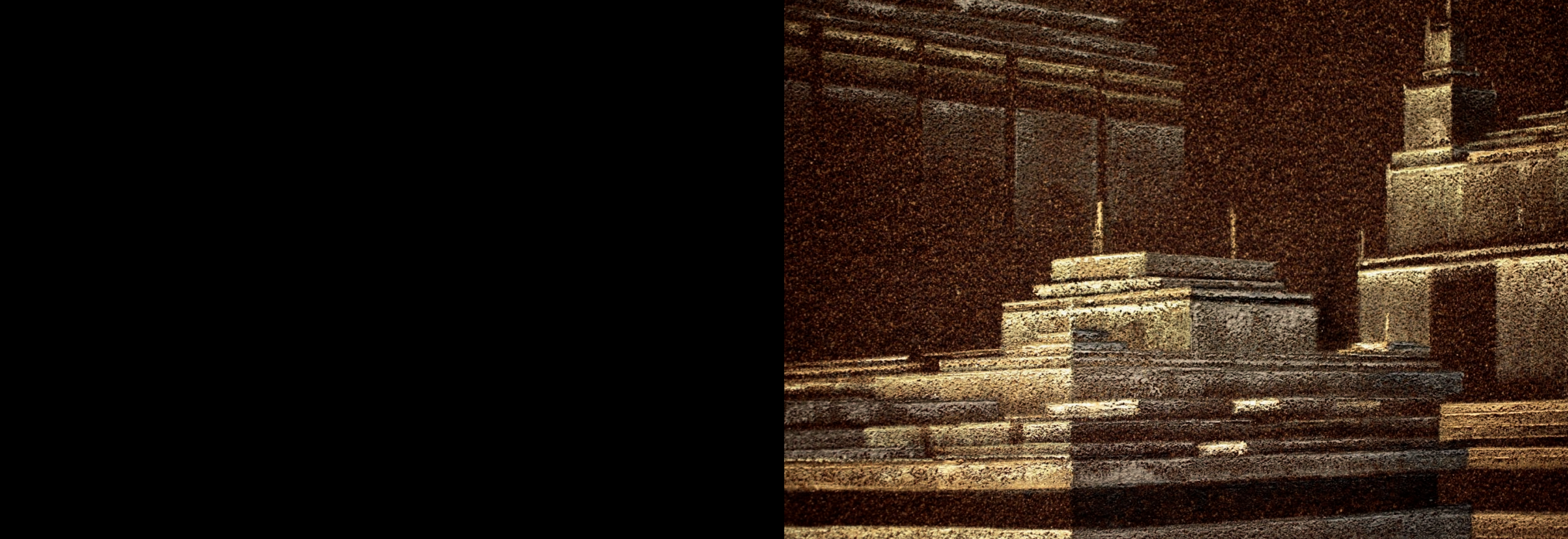
[100 x 150 cm]



CITTÀ SOSPESA

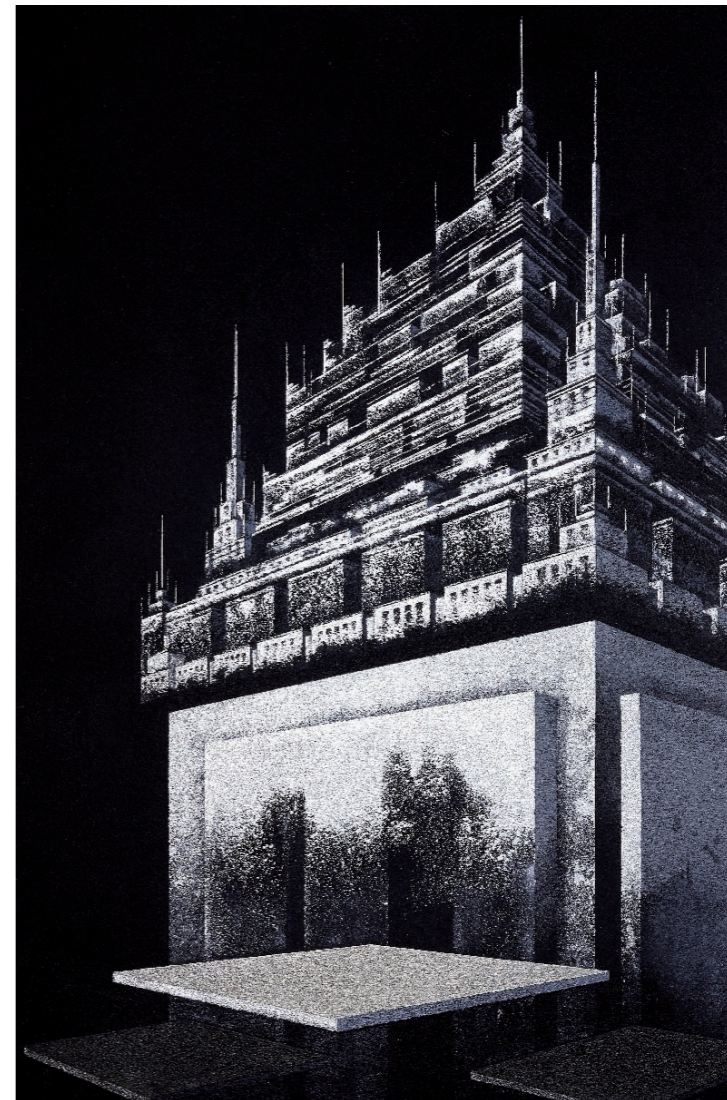
[120 x 200 cm]

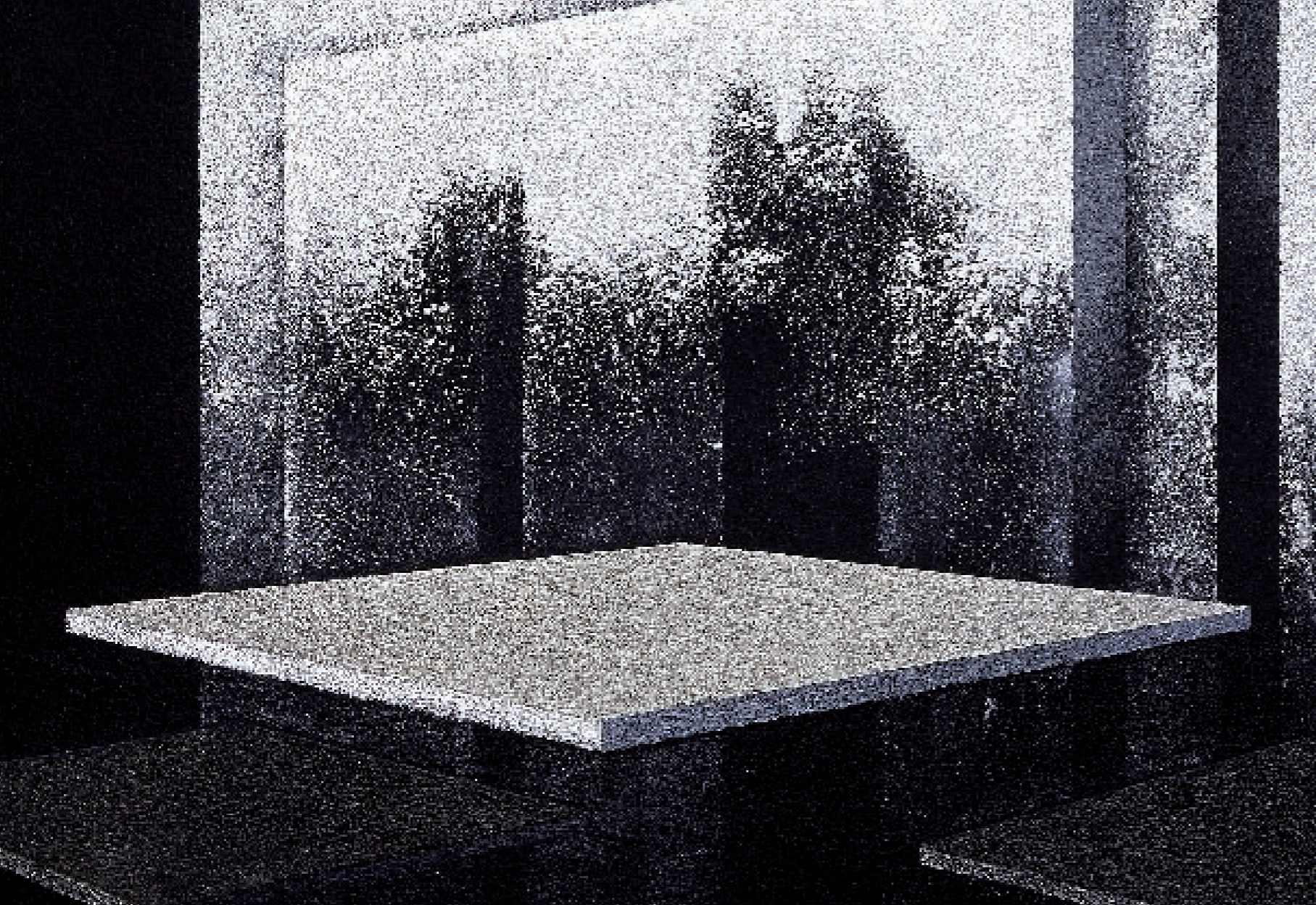




CITTÀ SOSPESA

[150 x 100 cm]

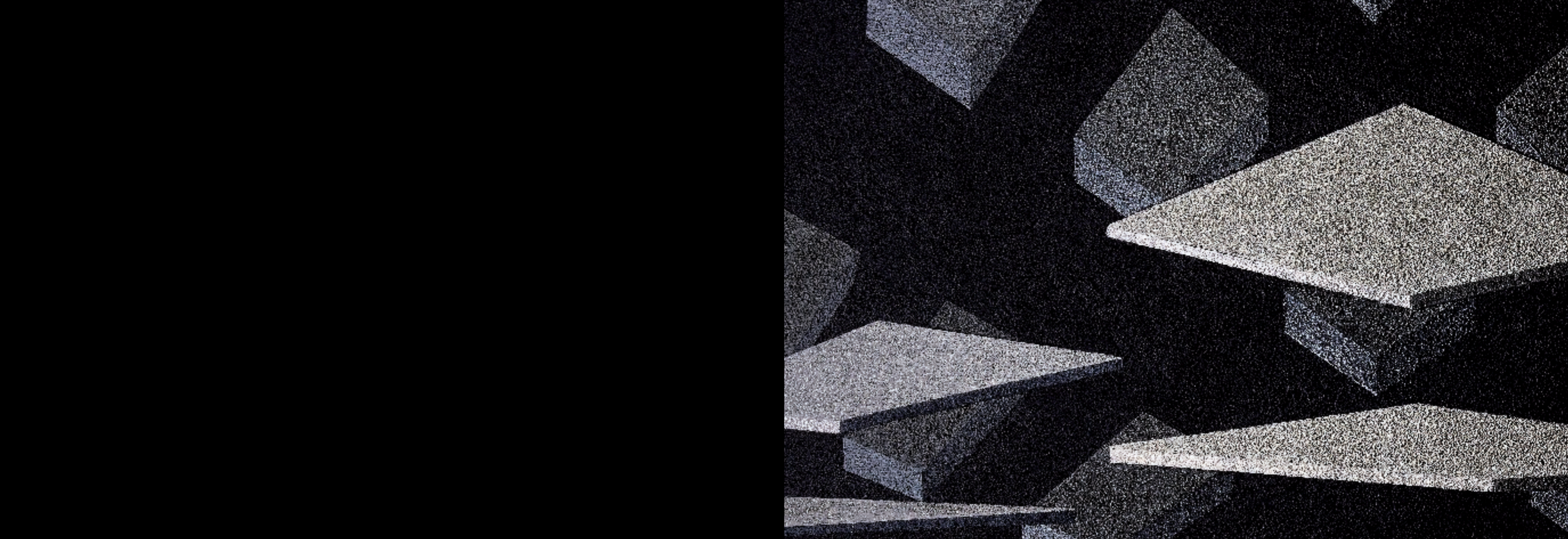




DIALOGO

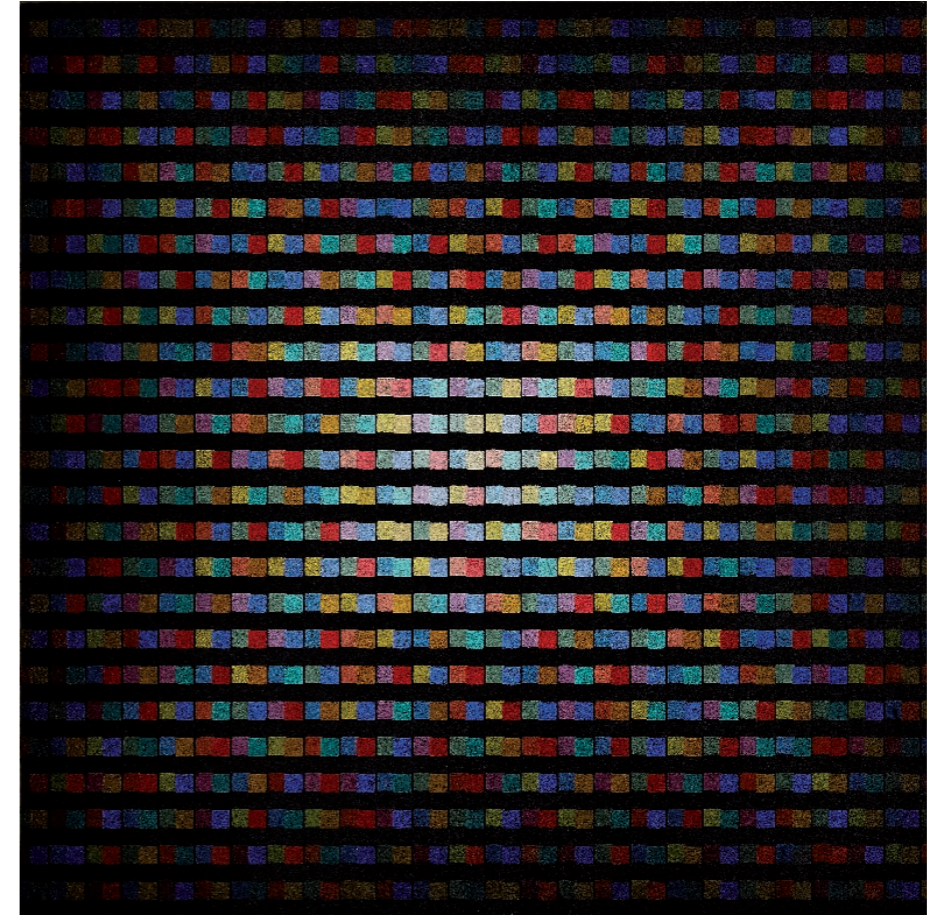
[100 x 150 cm]



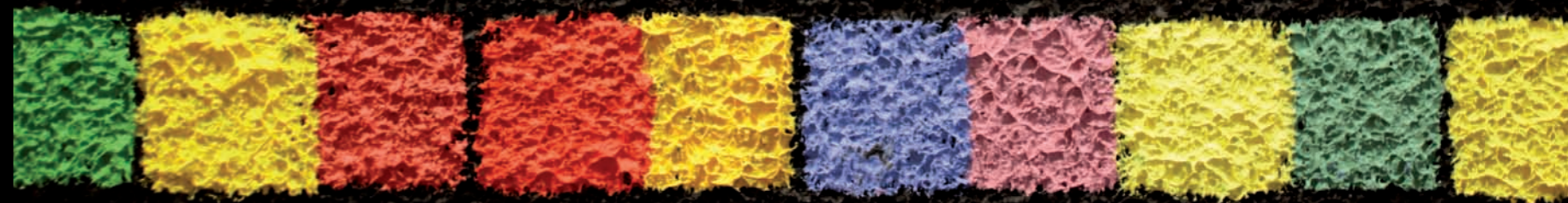
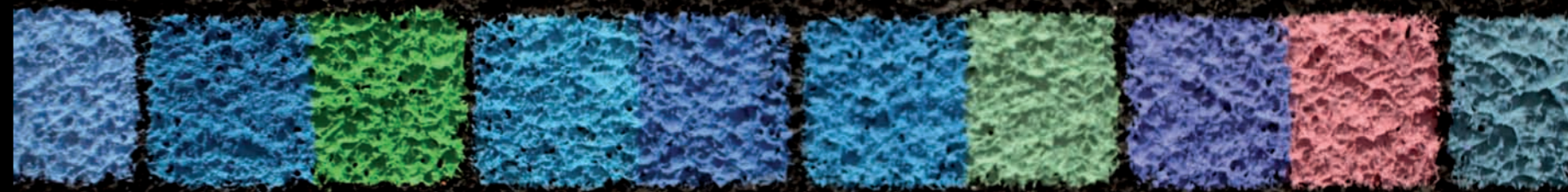


ON HOLY DAY

[100 x 100 cm]

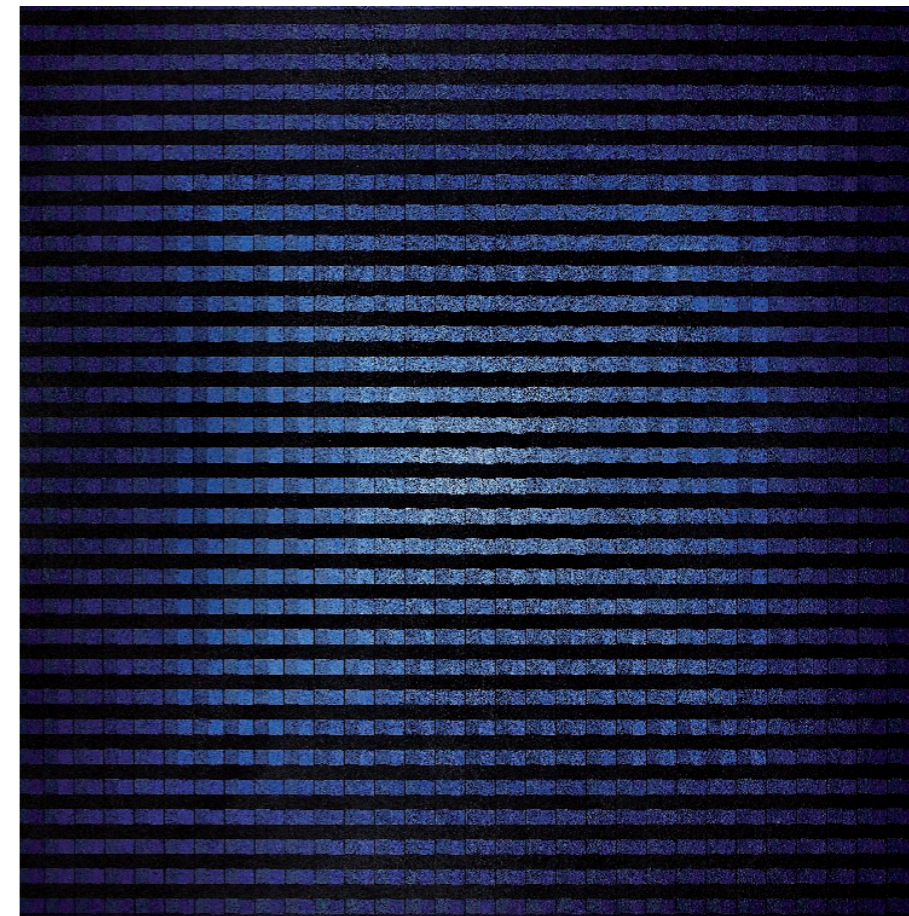


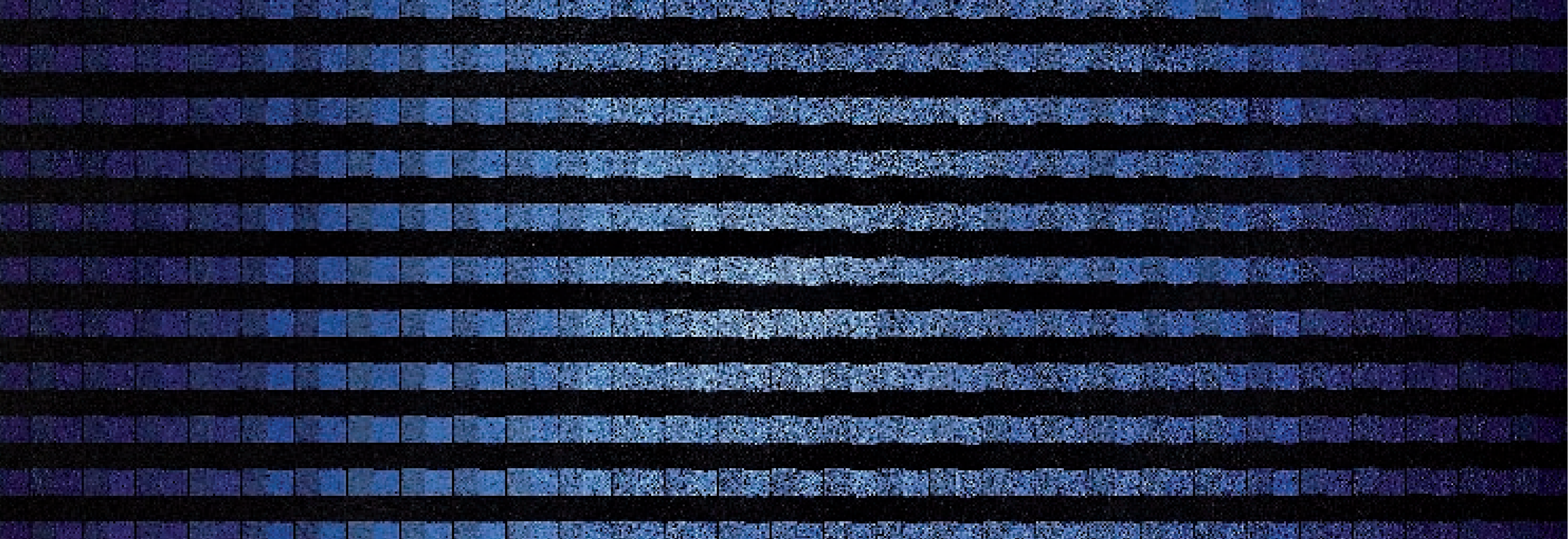




HUMAN KIND VISITING GOD

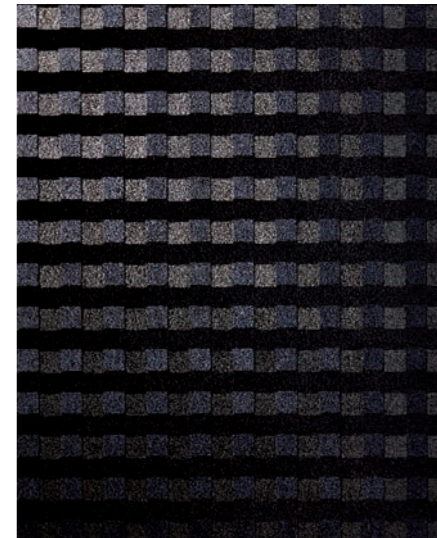
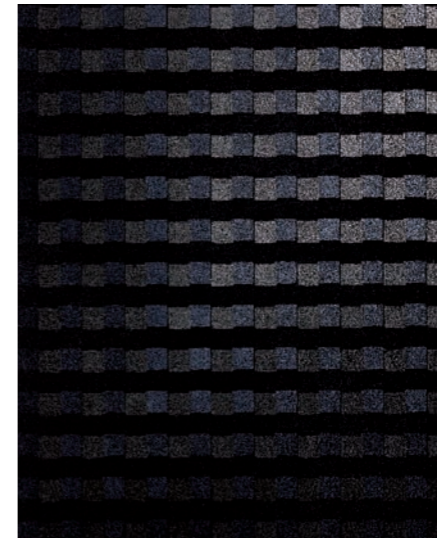
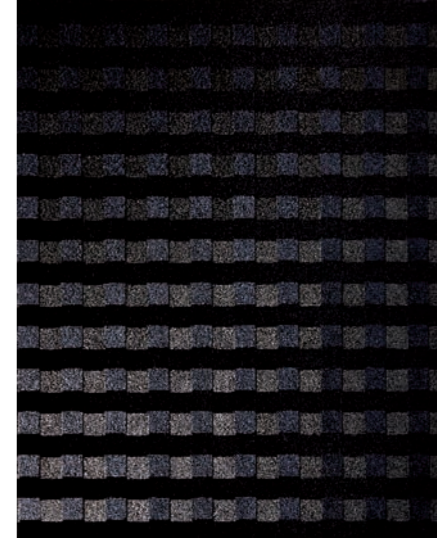
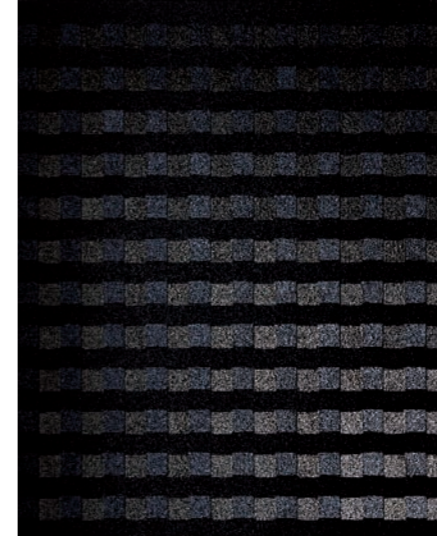
[150 x 150 cm]

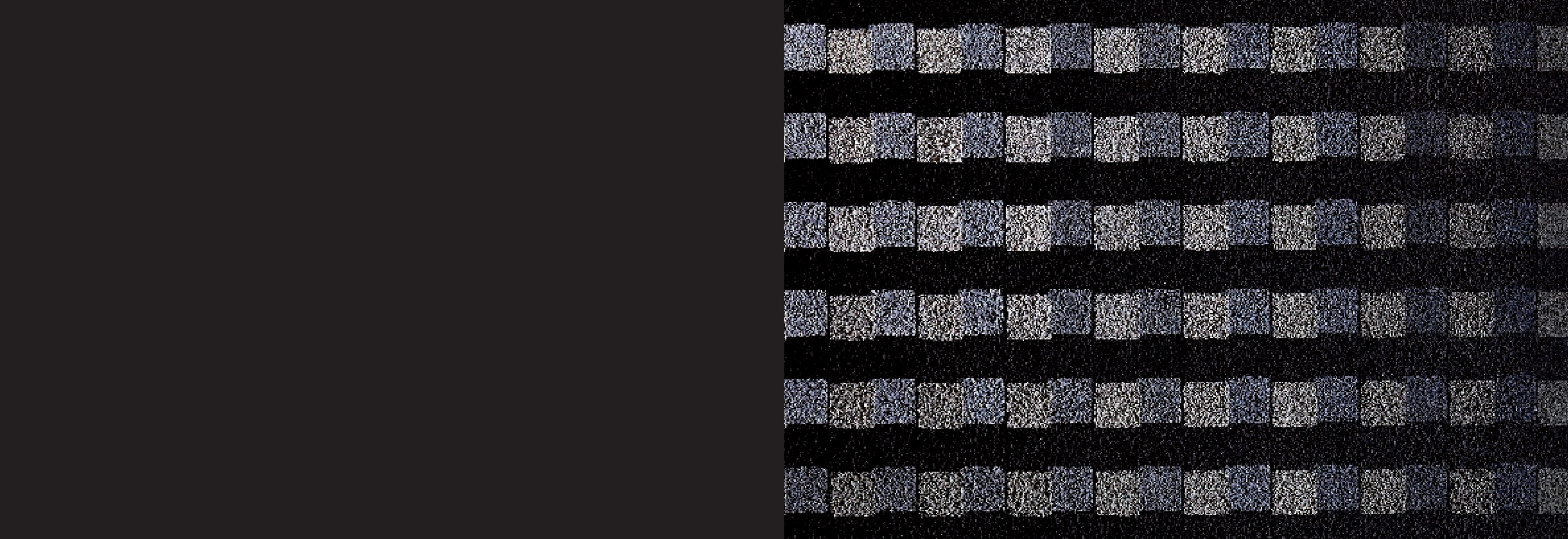




ONE OF FOUR

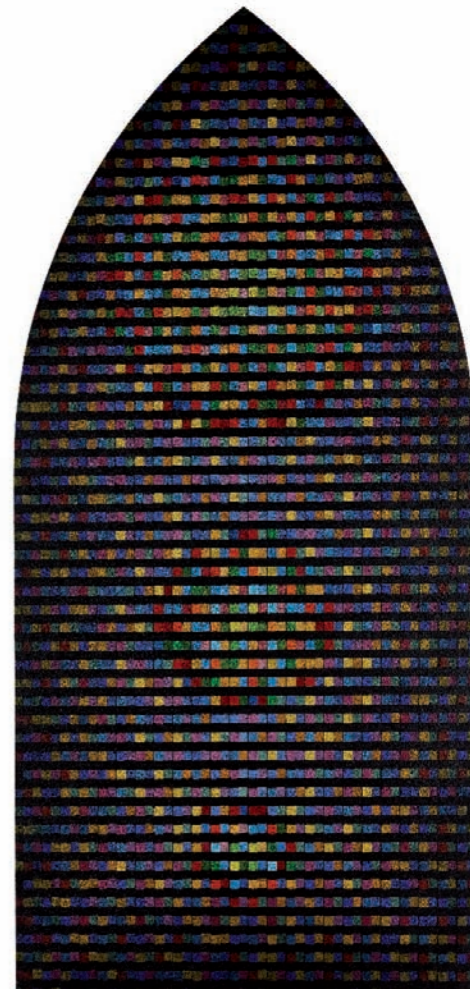
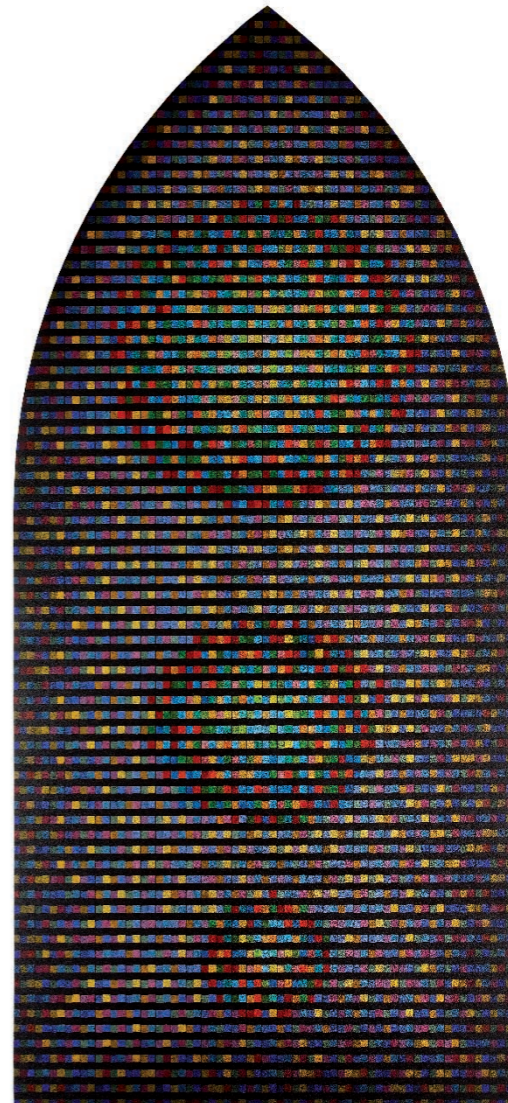
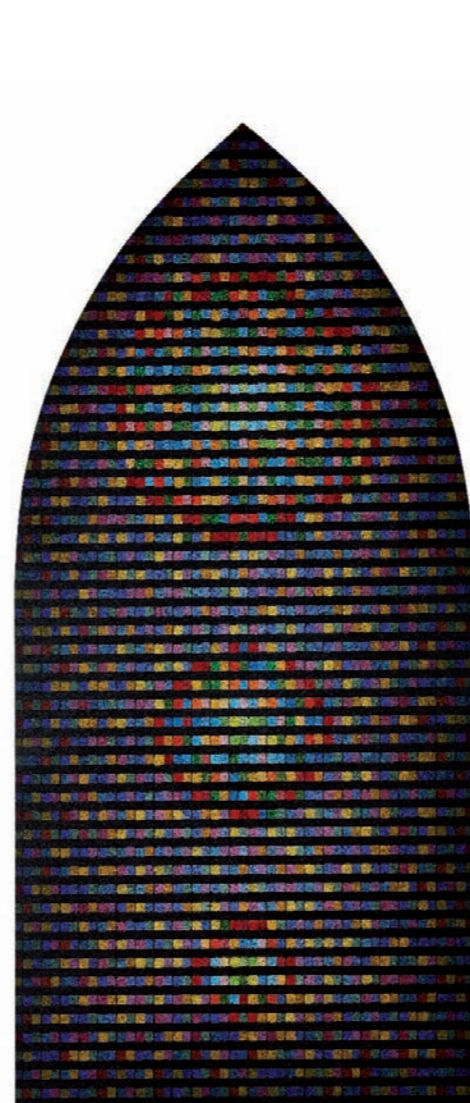
[100 x 80 cm]

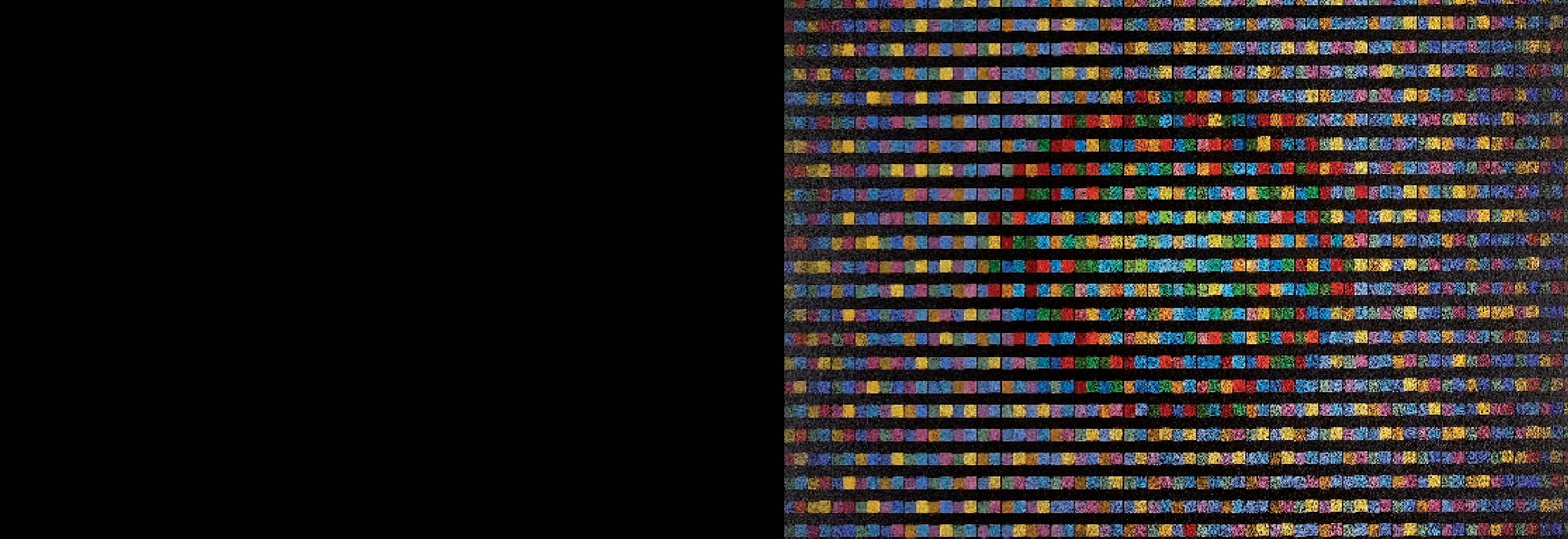


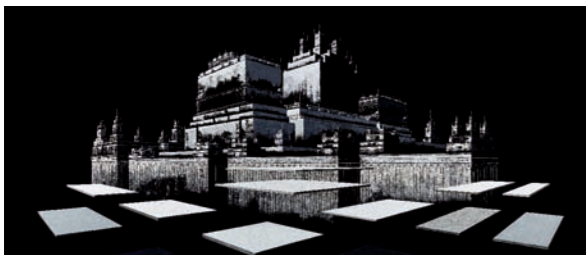


DUOMO

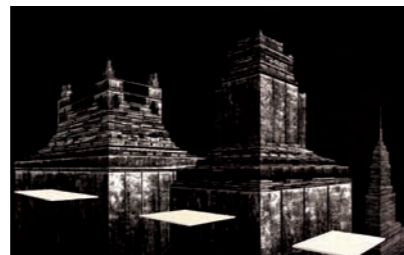
[300 x 220 cm]







Città sospesa
2013
260 x 600 cm



Stone City
2012
260 x 400 cm



Città sospesa con torri
2011
100 x 120 cm



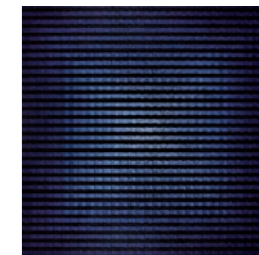
Città bianca
2011
100 x 150 cm



Città sospesa
2011
120 x 200 cm



On Holy Day
2013
100 x 100 cm



Human kind
Visiting God
2013
150 x 150 cm



Fortezza
2009
100 x 200 cm



Dwelling
of the Invisibles
2010
200 x 100 cm



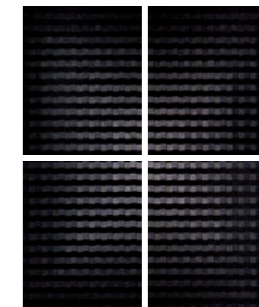
Città sospesa
2013
150 x 100 cm



Dialogo
2013
100 x 150 cm



Duomo
2013
300 x 220 cm



One of Four
2013
100 x 80 cm

2002

- Collective exhibition,
Gli amici pittori,
Super Studio, Milan

2003

- Solo show
Palazzo dei Priori,
Volterra (PI)
- First Prize
"Galileo Galilei"
Stazione Leopolda
collective exhibition,
Pisa

2007

- Solo show
Galleria Rubin, Milan

2009

- Solo show
Spirale Milano, Milan
- Arteverona, Verona
- Miart, Milan

2010

- Artefiera, Bologna
- Solo show
Galleria Como Arte,
Como
- Solo show
Galleria Mondo Arte,
Milan
- Miami Art Basel
(Regione Lombardia
pavilion)

2011

- Solo show
Galleria Art & Co,
Milan

2012

- Installation
Città di pietra / Stone City
Palazzo Reale,
Sala delle Cariatidi,
Milan

2013

- Solo show
Human Kind Visiting God,
Robilant+Voena
London

